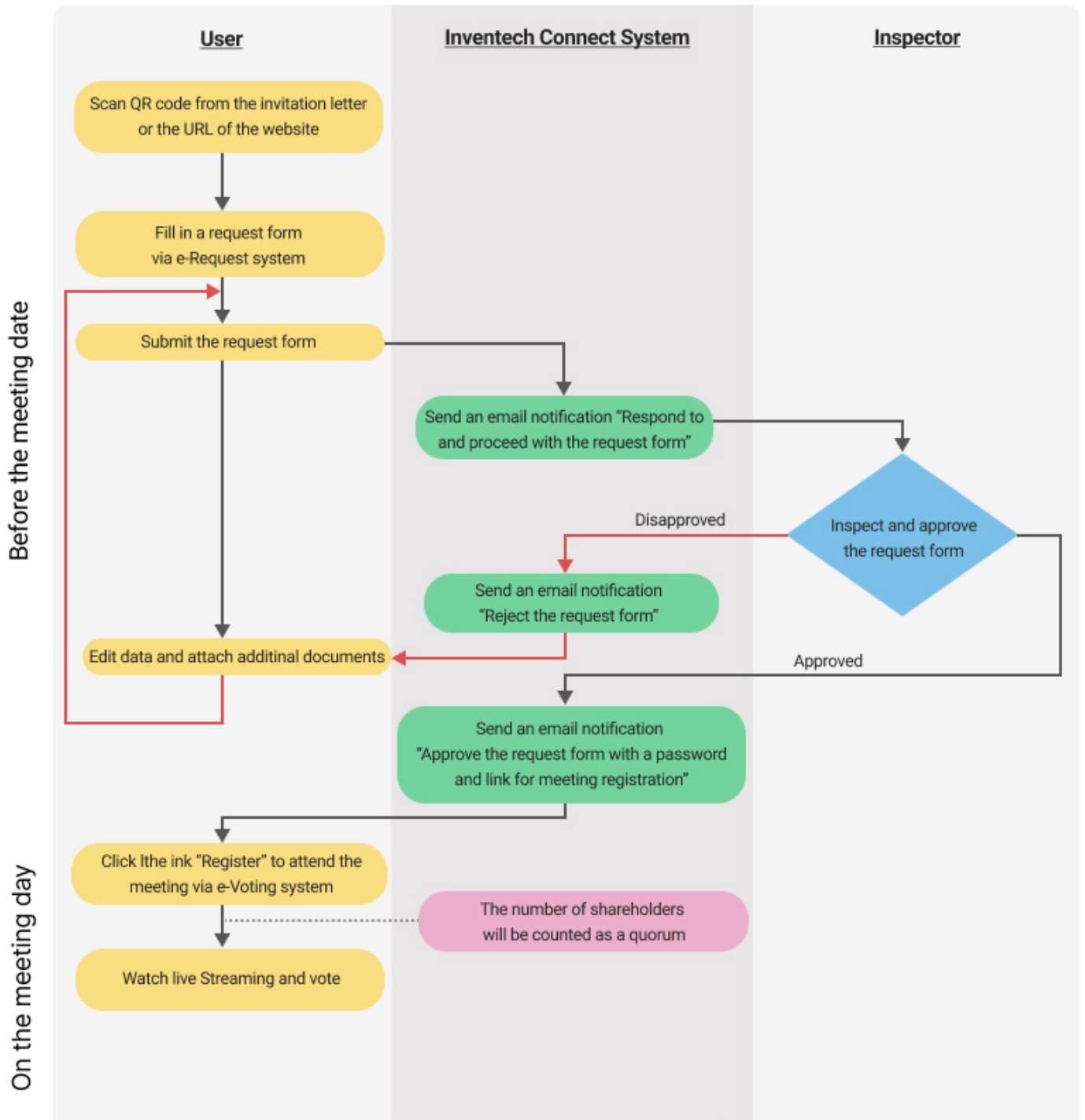


Flowchart for the Meeting Attendance via e-Meeting



System Usage Conditions

In case of merging / changing accounts

In case of submitting multiple request by using the same email and phone number, the systems will merge accounts or in case that user a has more than 1 account , he/she can click on "Change account" to switch between accounts, will still be while counted as the base account in the meeting

In case of leaving the meeting

Attendees can click on "Register for leaving the meeting", the number of your shares will be deducted from base votes in all unfinishedagenda items meeting base.